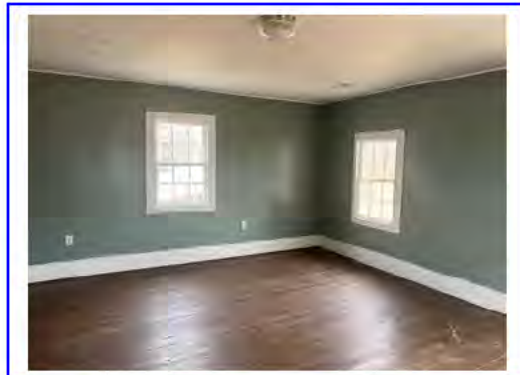


# 3905 N Hwy 101 Vintage Farm House



Vintage Two Story Farm House with large rooms and lots of charm. Located on about a half an acre lot. Pretty hardwood and pine floors. Many updates including rewiring / plumbing and central heat and air conditioning. Carport and play area in the yard included. One year lease and security deposit required.



## One Year Lease

Contact: Harold James

Cell: 420-0266

Office: 877-7456

[www.jamescompany.biz](http://www.jamescompany.biz)



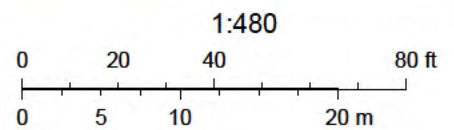




# Greenville County, SC



February 27, 2025



Greenville County GIS Division, Greenville, South Carolina, Greenville County GIS Division, Greenville County, South Carolina GIS Division